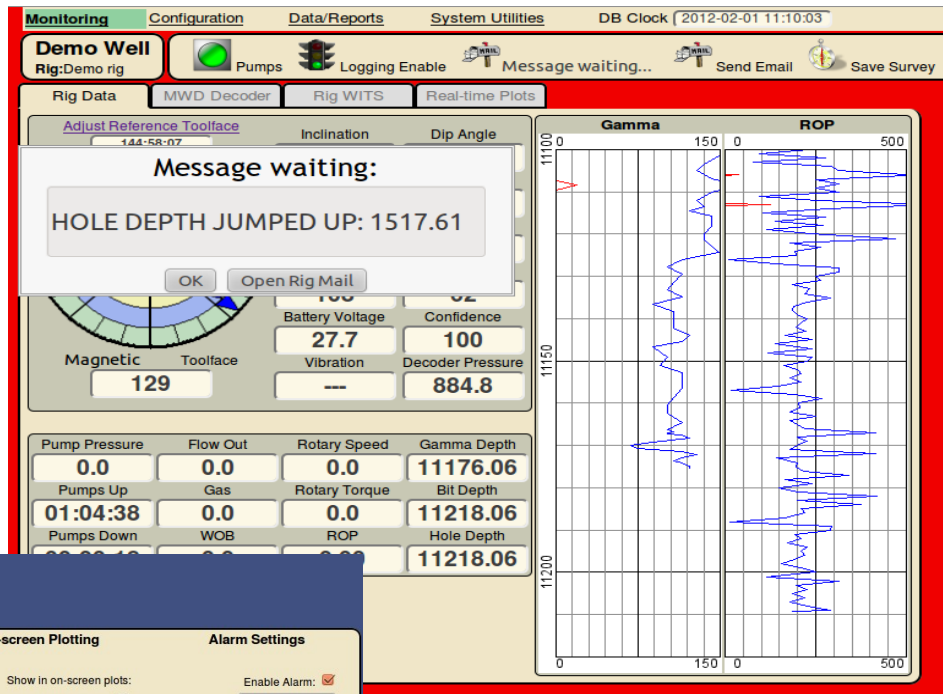


Alarm Handling and Red Background Alerts

When **Rig Mail** is received from another user or an alarm or other event has been logged into the database the normally blue background will turn red and a pop-up alert box will appear

For example, if the hole depth jumps erratically a pop-up notification will appear and a message will be put into the **Rig Mail** database

A full PDF report of these and other alarm events can be generated at any time (See below)



Demo Well [Return](#)

WITS Parameter Editor

Description	On-screen Plotting	Alarm Settings
Enable Logging: <input checked="" type="checkbox"/>	Show in on-screen plots:	Enable Alarm: <input checked="" type="checkbox"/>
WITS id: 0121	MWD <input type="checkbox"/>	Alarm Low: -9999.9
Name: Pump Press	Directional <input type="checkbox"/>	Alarm High: 5000
Units: PSI	Operator <input type="checkbox"/>	
Decimal places: 1	On-screen Plot Scaling	
Scale factor: 1	(Set both to "0" to auto-scale)	
Depth to bit offset: 0	Plot Scale Left: 0	
LAS Tag: SPP	Plot Scale Right: 0	
Export To LAS: <input type="checkbox"/>		
Enable Timelog: <input checked="" type="checkbox"/>		
Save Changes		

To enable alarm events for a particular WITS data edit the configuration and enter the desired alarm threshold

Pop-up notifications will appear when the data exceeds the alarm threshold. Press **OK** to acknowledge the alarm and close

Message waiting:

*** Pump Press Alarm Warning ***

[OK](#) [Open Rig Mail](#)

Alarm information is collected in the database and reports can be generated from the **Rig Notes** tab

Rig Notes **Rig Mail**

[Print Rig Notes](#)

[Add Note](#)

Date	Alarm Details	Action
2012-02-03 10:22:48	*** Pump Press Alarm from MWD *** Duration: 2.7 minutes Alarm Max: 5000.000000 Alarm Min: -9999.000000 Alarm reading: 1019.299988	Delete
2012-02-03 10:16:39	*** Pump Press Alarm from MWD *** Duration: 31.0 seconds Alarm Max: 980.000000 Alarm Min: -9999.000000 Alarm reading: 1023.900024	Delete
2012-01-31 14:20:40	*** Pump Press Alarm from MWD *** Duration: 1.4 minutes Alarm Max: 980.000000 Alarm Min: -9999.000000 Alarm reading: 1000.000000	Delete
2012-01-31 14:18:29	*** Pump Press Alarm from MWD *** Duration: 15.0 seconds Alarm Max: 980.000000 Alarm Min: -9999.000000 Alarm reading: 1000.000000	Delete