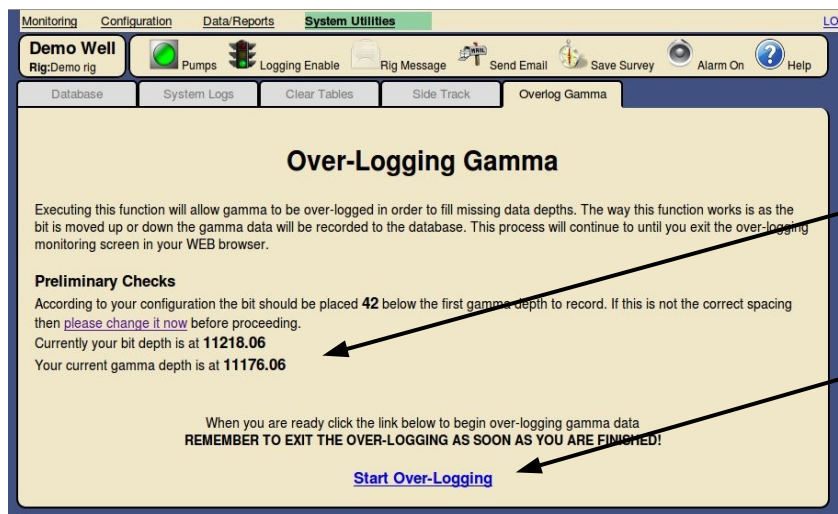


Re-logging Gamma To Fill Gap

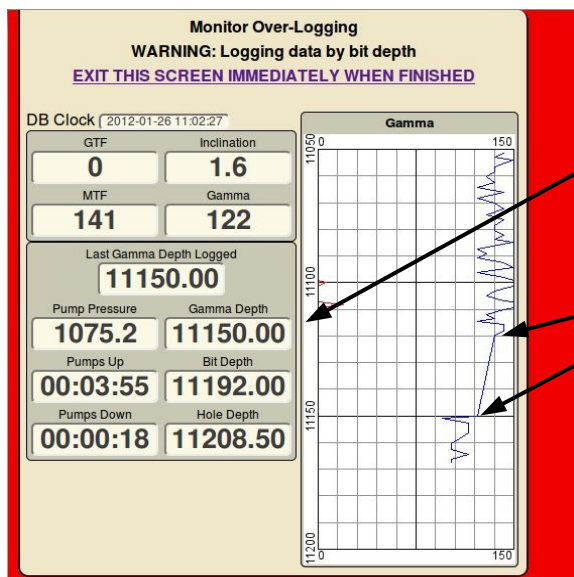
Gap filling can be easily accomplished by using the Overlog Gamma tab in the System Utilities section. During normal logging operations the **hole depth** is tracked since it is always moving in the same direction. However, when over-logging is performed the **bit depth** is tracked in **either** direction and the gamma data is written in the appropriate order.



Upon opening the tab make sure that the gamma sensor depth is located at the depth you wish to begin logging.

Click Start Over-Logging to begin logging operations in either direction. (up/down)

Once opened the over-logging will continue as long as the Over-logging Monitor is opened



Ensure that the starting gamma depth is located where the data needs to be written

Notice the gap in the data indicated by the straight line

Data will continue to be written while the bit moves up or down until the entire gap is filled in with gamma data

