

RDS Quick Start Guide



Connect an Ethernet cable between the WAN connector and your Internet

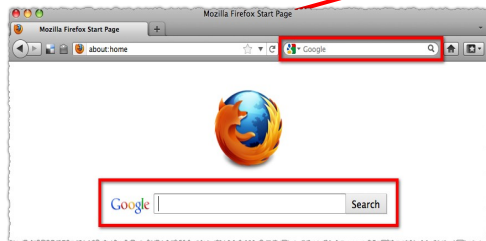
Connect an Ethernet cable from a Local Network connector to the MWD laptop used for logging

Connect a 9 pin Null Modem cable from the Rig WITS connector to the Rig WITS computer

Connect your MWD Decoder to the connector labeled MWD Decoder using the cable provided with the decoder

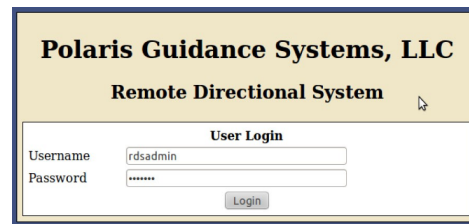
- Plug in the AC power cord and wait for 30 seconds for the internal router to boot up
- Press the Power button on the front panel and wait for the RDS computer to boot
- Once booted the display will alternately show the **Local IP address** and the **Internet IP address**

Step 1 Open the Firefox WEB browser: Open the Firefox WEB browser and enter the **Local IP address** into the address bar at the top (usually 192.168.10.5)

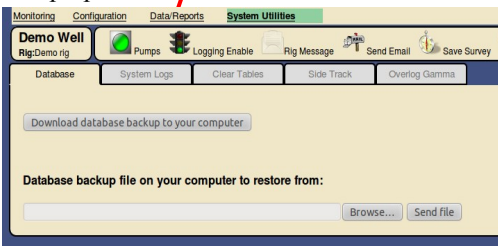


Step 2 Login locally to the RDS: When the login window appears enter the following:

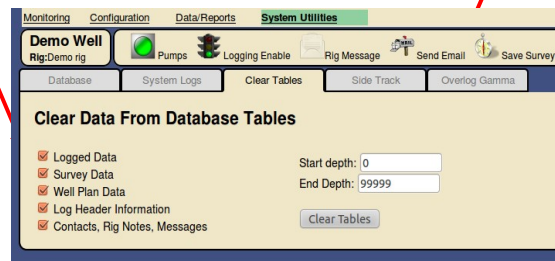
Username: **rdsadmin**
Password: **polaris**



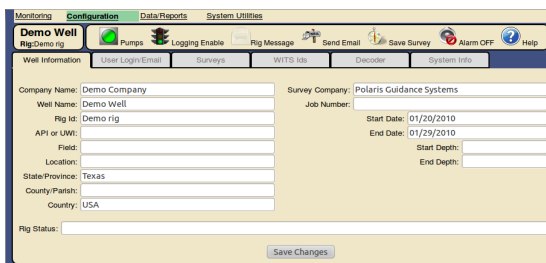
Step 3 Backup the database: Select **System Utilities** from the top menu bar then open the Database tab. Click on **Download database backup to your computer** button then save the backup file on your laptop



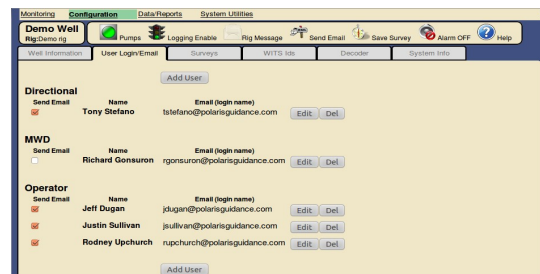
Step 4 Clear the previous data: Open the **Clear Tables** tab and select all of the check boxes then press the **Clear Tables** button to clear all of the previous recorded data



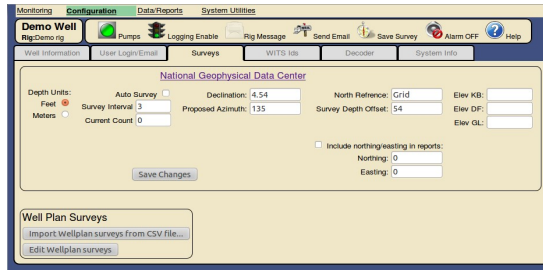
Step 5 Well information: Select **Configuration** from the top menu bar and enter the new well information. Press the **Save Changes** button when completed



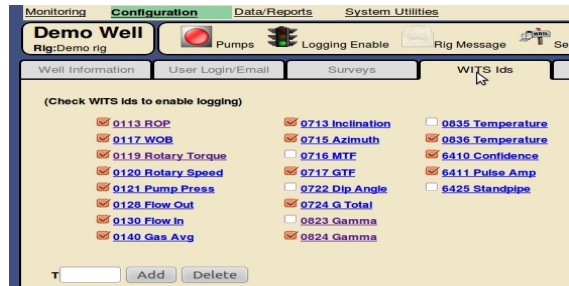
Step 6 Email and remote login: Open the **User Login/Email** tab and enter the Email addresses that receive reports. Those Email addresses are also used for remote login names.



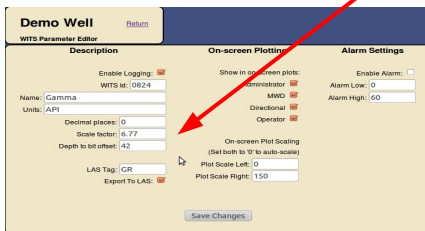
Step 7 Survey information: Enter the local declination and other pertinent survey configuration data



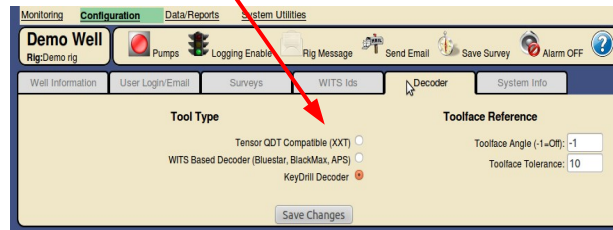
Step 8 Edit gamma configuration: The gamma ID sent from the decoder will be 0823 if the decoder is not scaling the gamma data. The ID will be 0824 if the decoder is scaling the gamma data



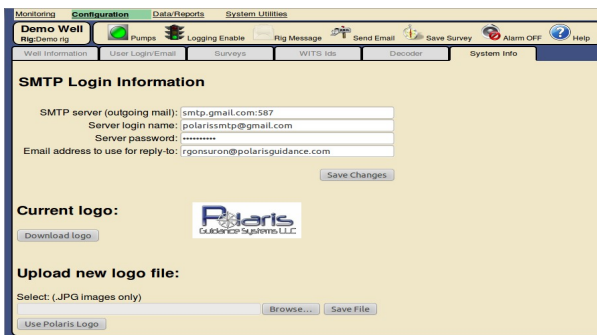
Step 9 Gamma scale factor and bit offset: Click on the corresponding gamma ID and enter the scale factor and bit offset to the gamma sensor



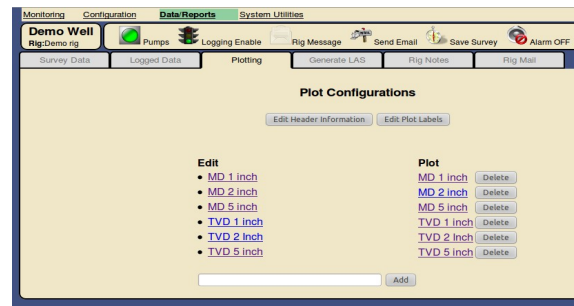
Step 10 Choose decoder: Open the *Decoder* tab and click on the appropriate decoder being used



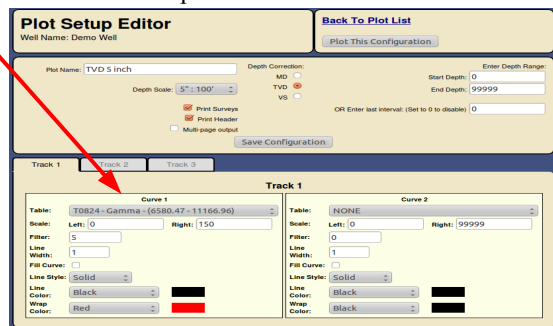
Step 11 System information: Enter your Email server's SMTP information and upload your company logo file



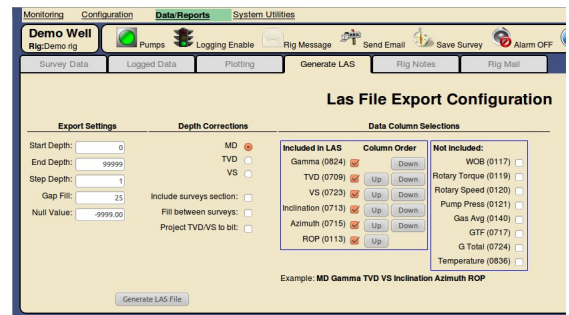
Step 12 Configure each plot: Configure each user defined plot by clicking the name of the plot in the left column



Step 13 Configure plot settings: Ensure that the correct gamma ID is selected for each plot



Step 14: Configure LAS file export: Check which data to be exported to LAS and arrange the column order



Select *Monitoring* from the top menu bar to proceed.

Ensure that logging is enabled.

